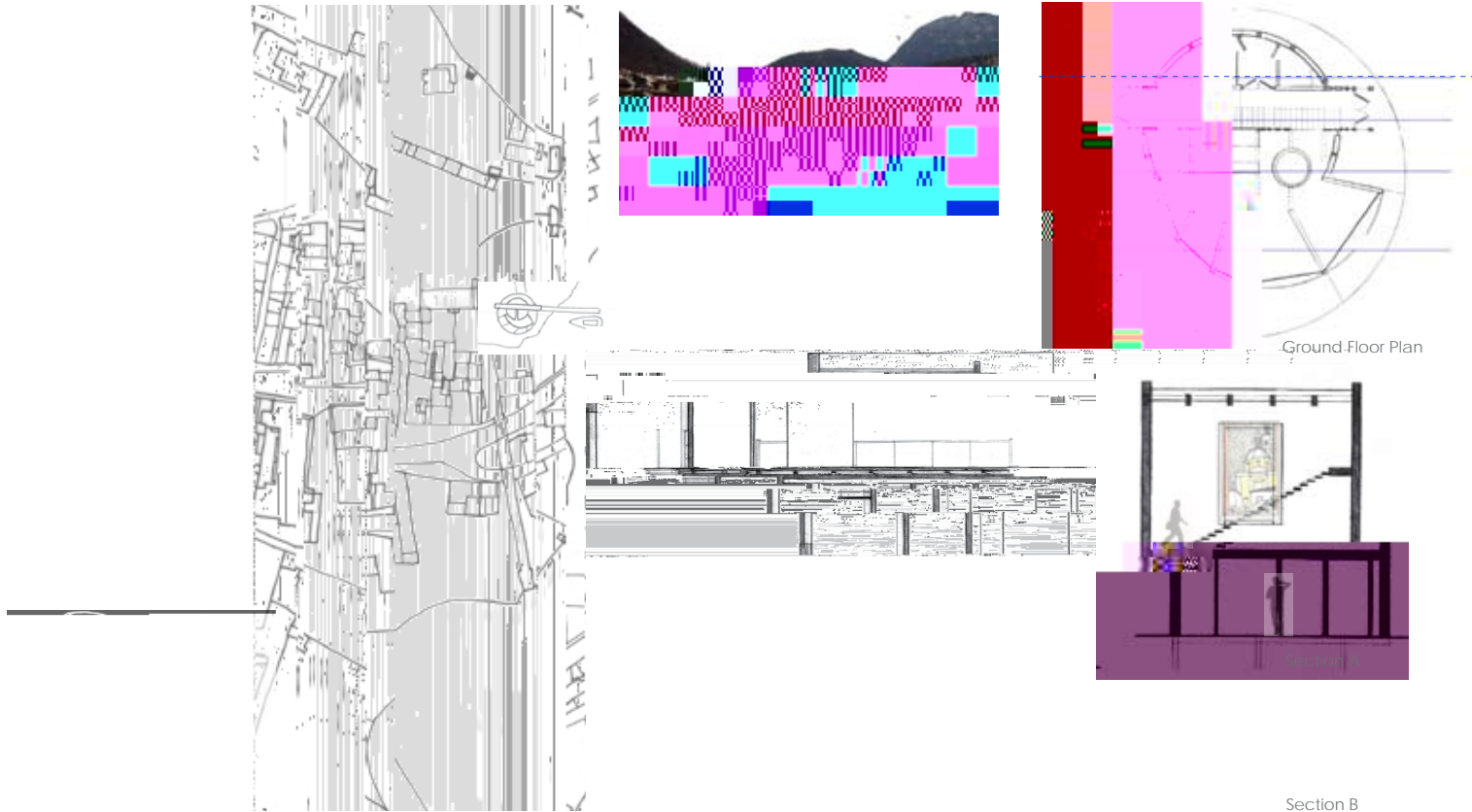
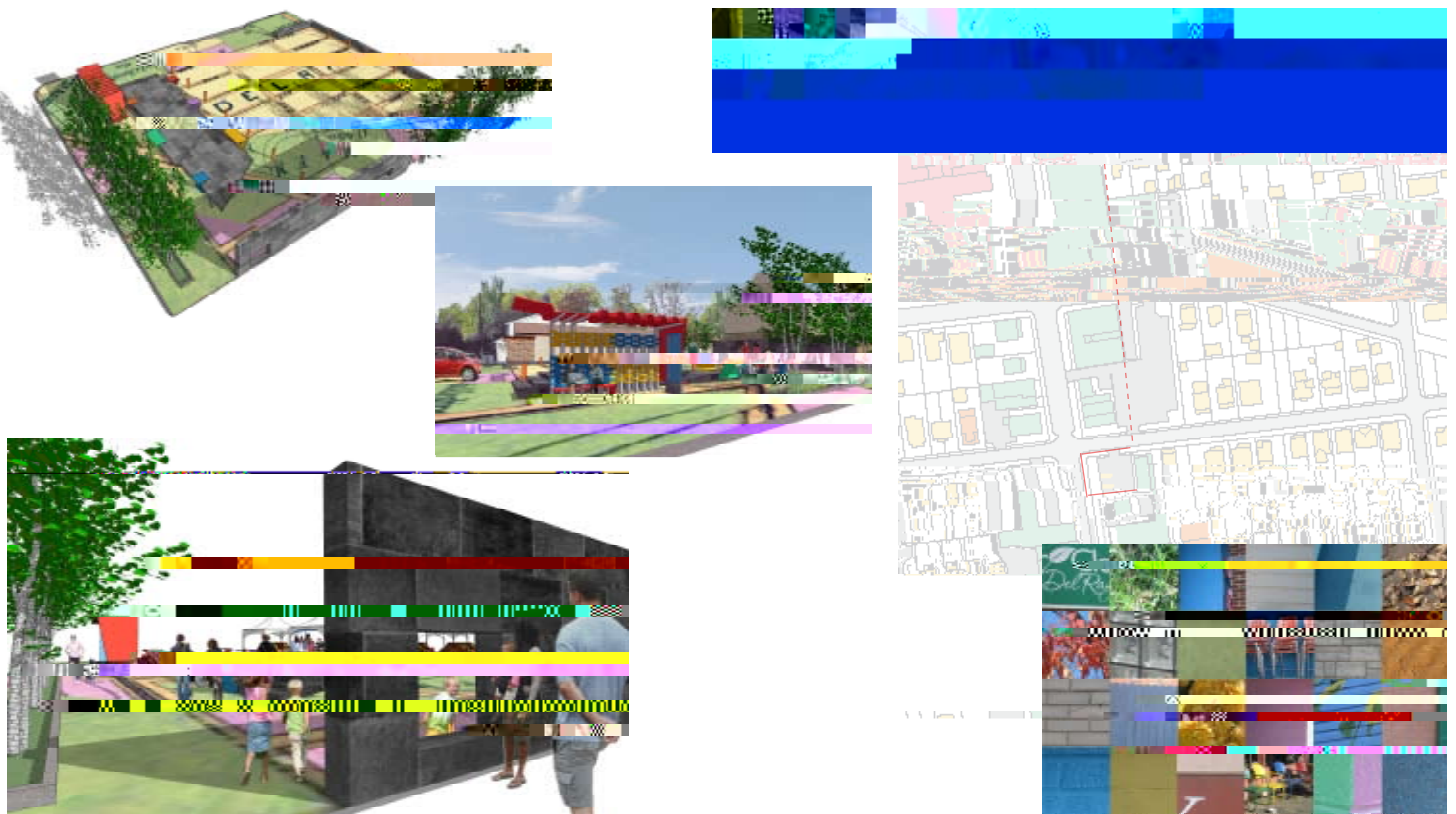


Boat Landing/Cafe | Lake Lugano in Riva San Vitale, Switzerland
Study of intersecting cylinders providing continuous and interrupted panoramic views, joined by linear circulation

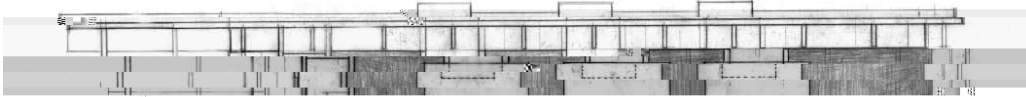
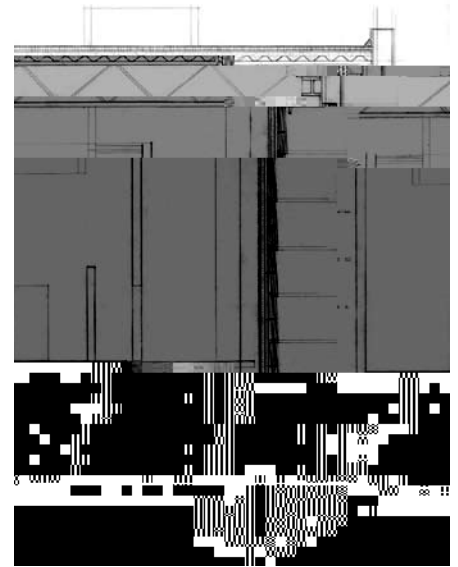
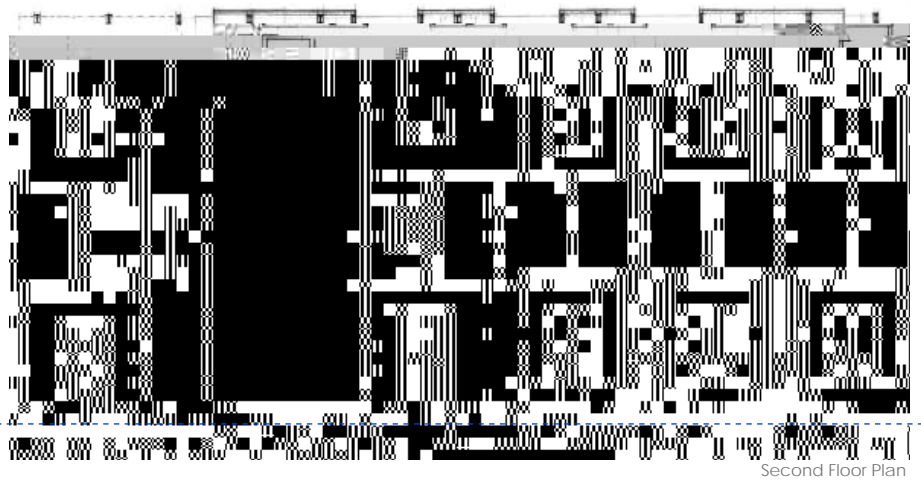


Independent Study Fall 2009

Community Corner/Farmer's Market | Oxford + Mount Vernon Avenues in Del Ray, VA
Collaboration with Camilo Bearman, an architect at Geier Brown Renfrow, to study role of public process in design



Sculpture Gallery | Virginia Tech's Campus in Blacksburg, VA
Six independent structures within an enclosure, punctured by skylights over each gallery box to control sunlight



Section

